



GMT MONTHLY MEMBERSHIP PROGRESS REPORT

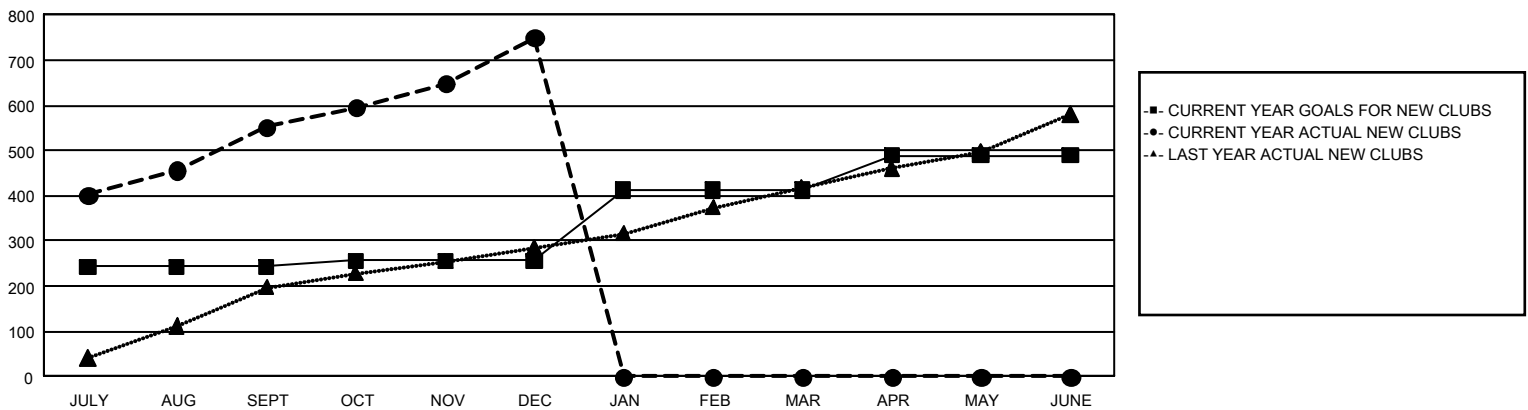
GAT Constitutional Area 6 - India

Results as of: 12/31/2025

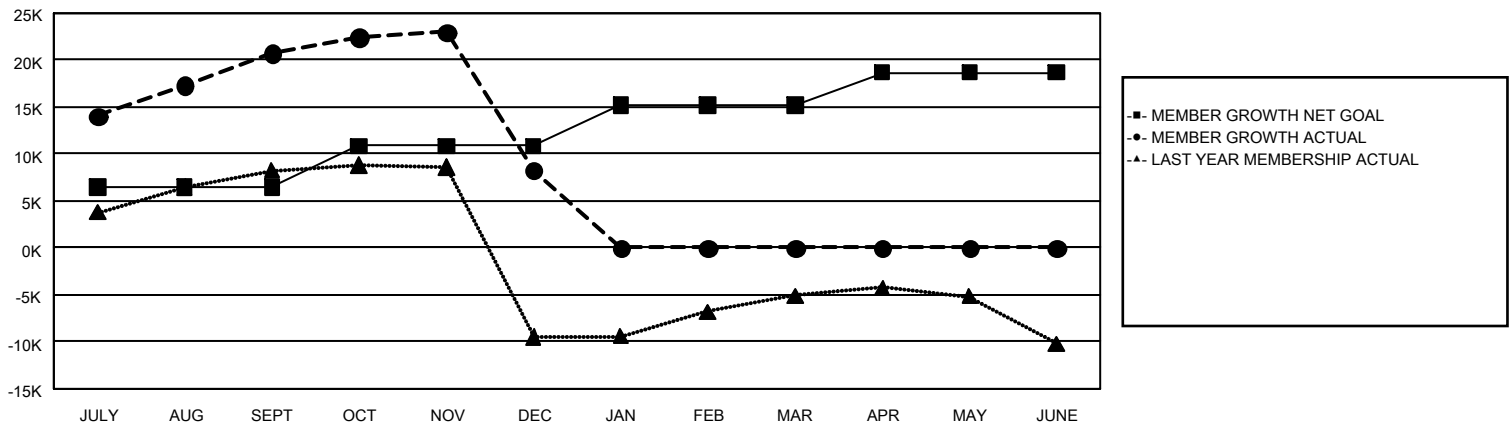
REPORT DOES NOT INCLUDE CLUBS IN UNDISTRICTED AREAS.

Clubs				Members			
RESULTS FOR 2025-2026				RESULTS FOR 2025-2026			
QUARTER	NEW CLUB GOAL	NEW CLUBS	DROPPED CLUBS	QUARTER	MEMBER GROWTH NET GOAL	MEMBER GROWTH ACTUAL	DROPPED MEMBERS ACTUAL (including transfers)
JULY/AUG/SEPT	244	553	106	JULY/AUG/SEPT	6,424	31,466	8,520
OCT/NOV/DEC	12	197	404	OCT/NOV/DEC	4,410	17,654	27,818
JAN/FEB/MAR	157	0	0	JAN/FEB/MAR	4,362	0	0
APR/MAY/JUNE	76	0	0	APR/MAY/JUNE	3,485	0	0

GOALS AND ACTUAL NEW CLUBS CUMULATIVE



GOALS AND ACTUAL MEMBERS CUMULATIVE



DROPPED CLUBS: 510

5,529 CLUBS OF 9,282 ADDED 1 OR MORE NEW MEMBERS

GENDER DISTRIBUTION

MALE 212,774 (73.71%)
FEMALE 75,847 (26.27%)

DROPPED MEMBERS

DECEASED	476
CLUB CANCELLED	16,319
OTHER	19,472
TOTAL	36,267

[CLICK HERE FOR CUMULATIVE MEMBERSHIP DATA](#)

TOTAL FAMILY UNIT MEMBERS	100,343
FAMILY MEMBERS PAYING HALF DUES	58,912